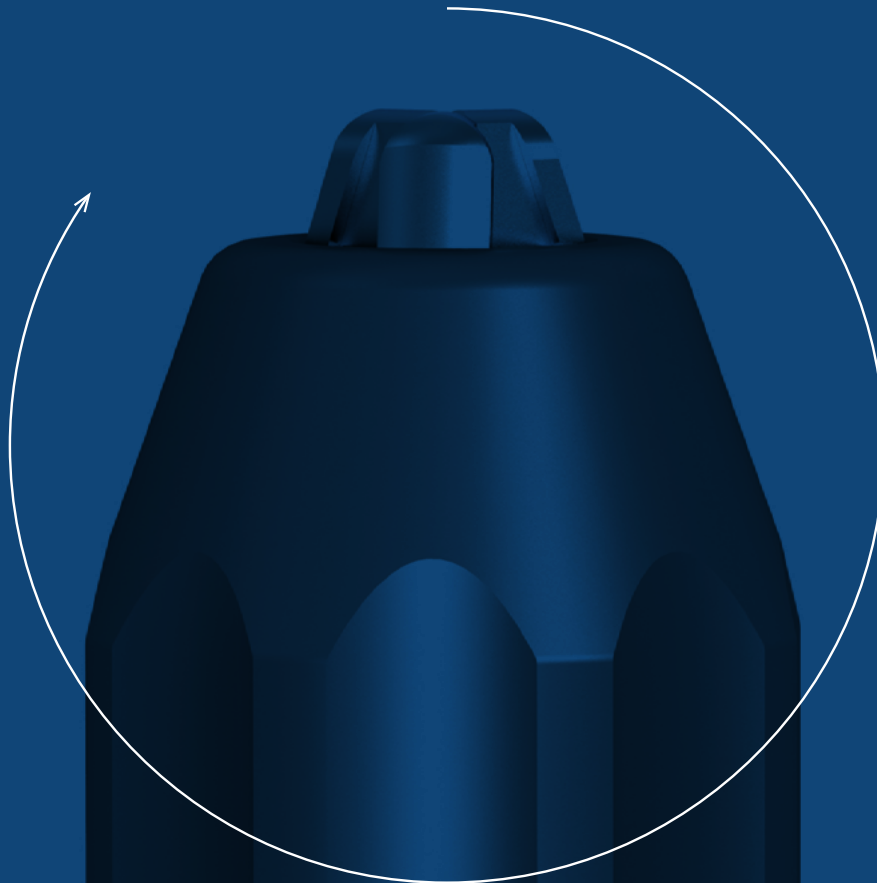


# LLAMBRICH

beyond precision



## SURGICAL DRILL CHUCKS

**Stainless Steel Drill Chucks  
for Surgical Instruments**

---

llambrich.com

since 1957

---

Llambriçh® originated from Barcelona, Spain and has been designing, engineering and manufacturing the world's most complete Stainless Steel Drill Chuck program for use in manual, power & air surgical instruments.

Llambriçh® is the first one drill chuck manufacturer in the world to hold the ISO 13485 certification for medical drill chuck products.



### Our commitment with our customers

To find new technological improvements, in order to be considered helpful always being an easy to do business with company, in the surgical market.

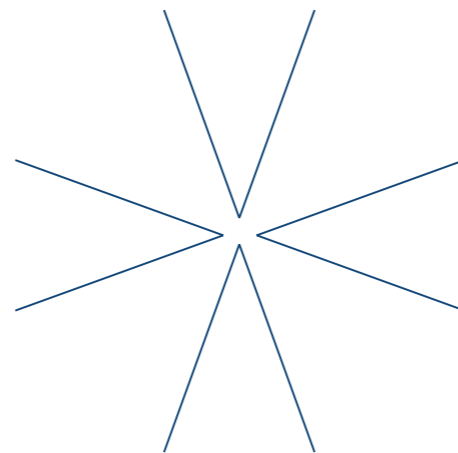
To offer innovative high quality solutions at a competitive price.

To be receptive and proactive in identifying solutions for our customer needs and requirements.

If you have any ideas, suggestions or comments on how we can better serve you please call +34 93 264 96 23 or e-mail us at [info@llambrich.com](mailto:info@llambrich.com)

# INOX

The world most complete  
Drill Chuck Program



# Index

**SPQ** page 4

SLIM Locking **Keyless** Surgical Chuck



**CSS Inox** page 5

Stainless Steel **Keyed** Drill Chucks



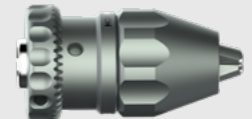
**SP Inox** page 6

Stainless Steel **Keyless** Drill Chucks



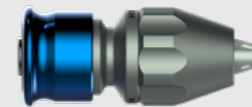
**SPH Inox "Hybrid"** page 7

Stainless Steel **"Hybrid"** Drill Chucks



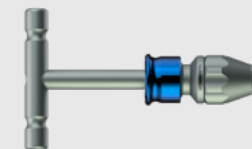
**SPT Inox** page 8

Stainless Steel **Keyless** Drill Chucks **w/Lock System**



**T-Handle Chucks** page 9

Stainless Steel Drill Chucks **w/T-Handle**



**Drill Chuck Attachments** page 10

Stainless Steel Drill Chucks **w/Quick Connectors:**  
AO small, AO large, Trinkle, Hudson, Harris,  
Zimmer and more



**Stainless Steel KEYS** page 11

Chuck **Keys** for CSS & SPH-Hybrid Stainless Drill Chucks

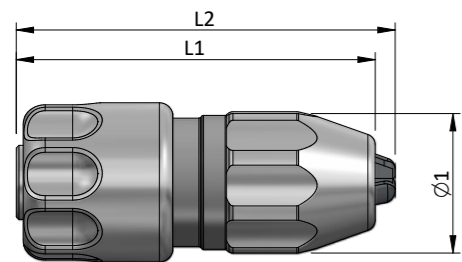


# SPQ

SLIM Locking Keyless Surgical Chuck

## Two-chucks-in-one

- Capacity larger than 1/4".
- Dimensions and weight like a 5/32" chuck.
- More surgical power tool control and more clearance for confined areas.
- Suitable for large, medium or small bone surgical power tools.
- Withstand clockwise, counterclockwise and oscillating rotation modes.
- All components are free of sharp edges: Excellent choice for use when operating with rubber gloves.
- Manufactured in stainless Steel series 300 and 400.
- Are treated with citric passivation processes to avoid corrosion.
- Resistant to autoclaving.
- All chucks are identified with a lot number for traceability according to ISO 13485.
- With thru hole for insertion of drills, reamers, pins and other surgical tools used in the medical field.

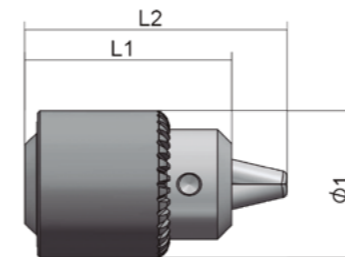
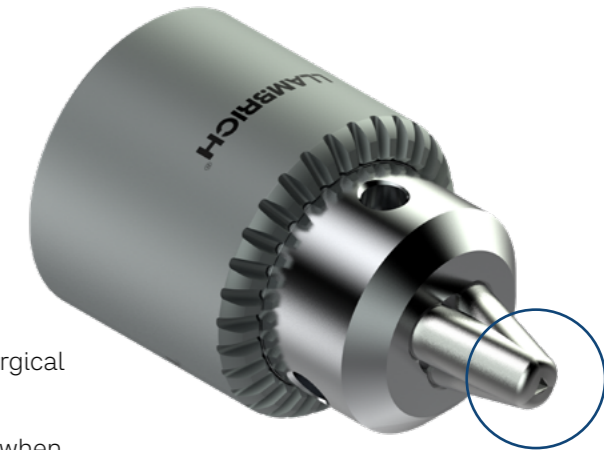


PART #	MODEL #	CAPACITY RANGE MIN-MAX		MOUNT	Ø THRU HOLE		Ø1		L1		L2		WEIGHT	
		inches	millimeters		in.	mm	in.	mm	in.	mm	in.	mm	lbs	gram
PQI07STCD0000	SPQ07 CD 1/4	.0256 - .291	0.65 - 7.4	5/16-24	0.165	4.2	1.04	26.5	2.57	65.3	2.76	70	0.41	188
PQI07STHD0000	SPQ07 HD 1/4												0.42	190

# CSS Inox

Stainless Steel Keyed Drill Chucks

- The most demanded chuck for medical and veterinary surgery.
- Tightened by key, allowing any rotation direction of the drill or surgical tool: clockwise, counterclockwise or oscillatory.
- All components are free of sharp edges: Excellent choice for use when operating with rubber gloves.
- Manufactured in stainless steel series 300 and 400.
- Are treated with citric passivation processes to avoid corrosion.
- Resistant to autoclaving.
- For traceability according to ISO 13485, all chucks and keys are identified with a lot number. CSS chucks and their chuck keys (see page 11) are ordered separately.
- With thru hole for insertion of drills, reamers, pins and other surgical tools used in the medical field.

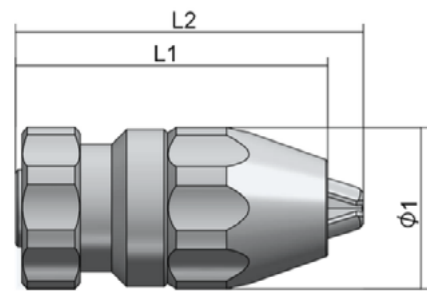


CODE #	MODEL #	CAPACITY RANGE MIN-MAX		MOUNT	KEY	Ø THRU HOLE		Ø1		L1		L2		WEIGHT	
		inches	millimeters			in.	mm	in.	mm	in.	mm	in.	mm	lbs	gram
CSS0412081	CSS-04 J0 GE	.020 - .156	0.5 - 4	J0	K0M	0.19	5	0.87	22	1.10	28	1.38	35	0.11	48
CSS0418081	CSS-04 R 5/16 GE			5/16-24						1.18	30	1.46	37		
CSS0604101	CSS-06 J1 GE-DS			J1		0.29	7.5								
CSS0609101	CSS-06 R3/8 GE-DS	.020 - .291	0.5 - 7.4	3/8-24	K1M	0.29	7.5	1.10	28	1.57	40	2.00	51	0.24	110
CSS0618091	CSS-06 R5/16 GE-DS			5/16-24											
CSS1009081	CSS-10 R3/8 GE	.020 - .39	0.6 - 10	3/8-24	K10M	0.30	7.8	1.46	37	2.00	51	2.44	62	0.55	250

# SP Inox

## Stainless Steel Keyless Drill Chucks

- For hand tightening, no need of key.
- Self-tightening mechanism automatically increases the clamping forces in proportion to the increase in torque during the drilling operation. This prevents tool slippage in clockwise rotation only.
- Specially designed for medical and veterinary surgical instruments.
- All components are free of sharp edges: Excellent choice for use when operating with rubber gloves.
- Manufactured in stainless steel series 300 and 400.
- Are treated with citric passivation processes to avoid corrosion.
- Resistant to autoclaving.
- All chucks are identified with a lot number for traceability according to ISO 13485.
- With thru hole for insertion of drills, reamers, pins and other surgical tools used in the medical field.

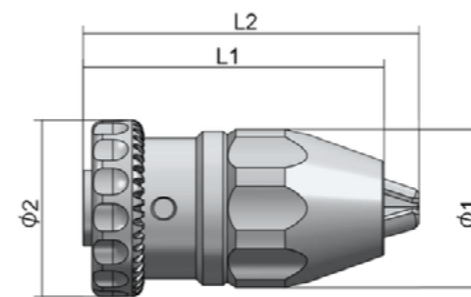


CODE #	MODEL #	CAPACITY RANGE MIN-MAX		MOUNT	Ø THRU HOLE		Ø1		L1		L2		WEIGHT	
		inches	millimeters		in.	mm	in.	mm	in.	mm	in.	mm	lbs	gram
PNI011208	SP-15 J0 FGE	.008 - .059	0.2-1.5	J0	0.07	1.8	0.79	20	1.42	35	1.46	37	0.11	52
PNI031208	SP-03 J0 FGE			J0										
PNI030918	SP-03 R3/8 FGE	.012 - .118	0.3 - 3	3/8-24	0.17	4.2	1.06	27	1.77	47	2.00	51	0.29	130
PNI031808	SP-03 R5/16 FGE			5/16-24										
PNI070410	SP-07 J1 FGE-C	.012 - .291	0.3 - 7.4	J1	0.20	5.3	1.26	32	2.32	59	2.60	66	0.48	218
PNI070910	SP-07 R3/8 FGE-C			3/8-24										

# SPH Inox

## Stainless Steel "Hybrid" Drill Chucks

- Combines the accuracy of a keyless chuck and the tightening torque of a keyed chuck:
  - Used as a Keyless chuck.** Self-tightening mechanism automatically increases the clamping forces in proportion to the increase in torque during the drilling operation. This prevents tool slippage in clockwise rotation only.
  - Used as a Keyed chuck.** Tightening force is 2 times more than a conventional keyed chuck, allowing the most demanding drilling operation in any rotation direction of the drill or surgical tool: clockwise, counterclockwise or oscillatory.
- Specially designed for medical and veterinary surgical instruments.
- All components are free of sharp edges: Excellent choice for use when operating with rubber gloves.
- Manufactured in stainless steel series 300 and 400.
- Are treated with citric passivation processes to avoid corrosion.
- Resistant to autoclaving.
- For traceability according to ISO 13485, all chucks and keys are identified with a lot number. SPH chucks and their chuck keys (see page 11) are ordered separately.
- With thru hole for insertion of drills, reamers, pins and other surgical tools used in the medical field.

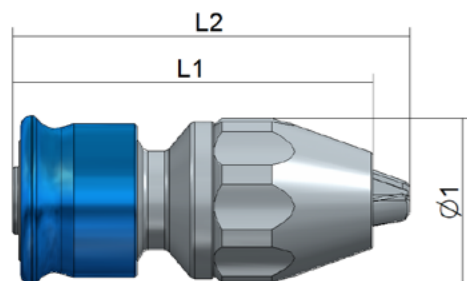


CODE #	MODEL #	CAPACITY RANGE MIN-MAX		MOUNT	KEY	Ø THRU HOLE		Ø1	L1	L2	Ø2	WEIGHT					
		inches	millimeters			in.	mm					in.	mm	in.	mm	lbs	gram
PHI031208	SPH-03 J0 FGE			J0													
PHI030908	SPH-03 R3/8 FGE	.012 - .118	0.3 - 3	3/8-24	K0T	0.16	4.2	1.06	27	1.85	47	2.00	51	1.14	29	0.29	130
PHI031808	SPH-03 R5/16 FGE			5/16-24													
PHI070410	SPH-07 J1 FGE-C	.012 - .291	0.3 - 7.4	J1	K1T	0.20	5.3	1.26	32	2.32	59	2.59	66	1.34	34	0.50	225
PHI070910	SPH-07 R3/8 FGE-C			3/8-24													

# SPT Inox

## Stainless Steel Keyless Drill Chucks w/Lock System

- For hand tightening, no need of a key.
- Unique and innovative design equipped with a lock system feature to prevent slippage of surgical tools (drills, reamers, pins) in any rotation direction of the drill or surgical tool: clockwise, counterclockwise or oscillatory.
- Specially designed for medical and veterinary surgical instruments.
- All components are free of sharp edges: Excellent choice for use when operating with rubber gloves.
- Manufactured in stainless steel series 300 or 400, and anodized aluminium.
- Are treated with citric passivation processes to avoid corrosion.
- Resistant to autoclaving.
- All chucks are identified with a lot number for traceability according to ISO 13485.
- With thru hole for insertion of drills, reamers, pins and other surgical tools used in the medical field.

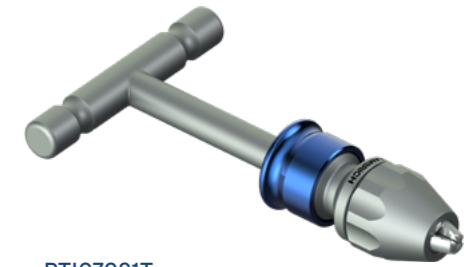
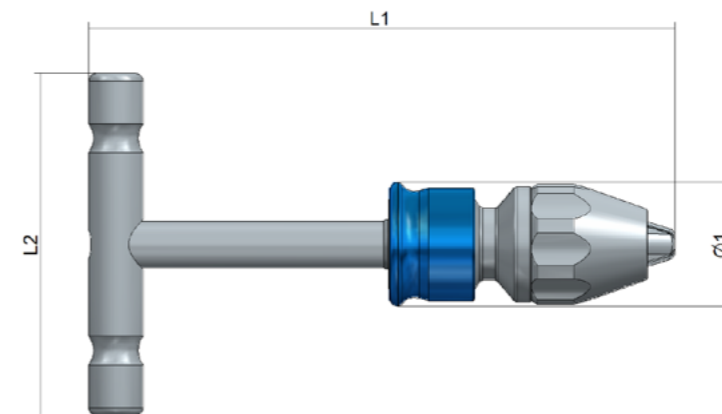


CODE #	MODEL #	CAPACITY RANGE MIN-MAX		MOUNT	Ø THRU HOLE		Ø1		L1		L2		WEIGHT	
		inches	millimeters		in.	mm	in.	mm	in.	mm	in.	mm	lbs	gram
PTI070911	SPT-07 R3/8 FGE	.012 - .291	0.3 - 7.4	3/8-24	0.20	5.3	1.26	32	2.68	68	2.95	75	0.48	220

# T-Handle Chucks

## Stainless Steel Drill Chucks w/T-Handle

- For insertion of medical pins (Steinmann, Schanz, etc.)
- Available for all Llambrich stainless steel drill chuck series : Keyed (CSS), Keyless (SP), Hybrid (SPH) & Keyless w/Lock System (SPT).
- Specially designed for medical and veterinary surgery.
- All components are free of sharp edges: Excellent choice for use when operating with rubber gloves.
- Manufactured in stainless steel series 300 or 400, and anodized aluminium.
- Are treated with citric passivation processes to avoid corrosion.
- Resistant to autoclaving.
- All chucks are identified with a lot number for traceability according to ISO 13485.
- With thru hole Ø5 mm (0.196 inches) for insertion of surgical pins.



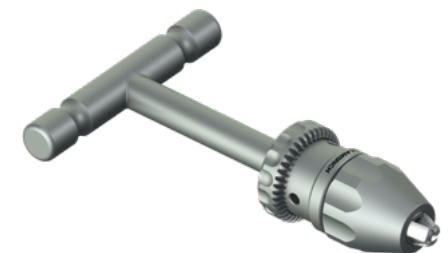
PTI07091T



CSS06091T



PNI07091T



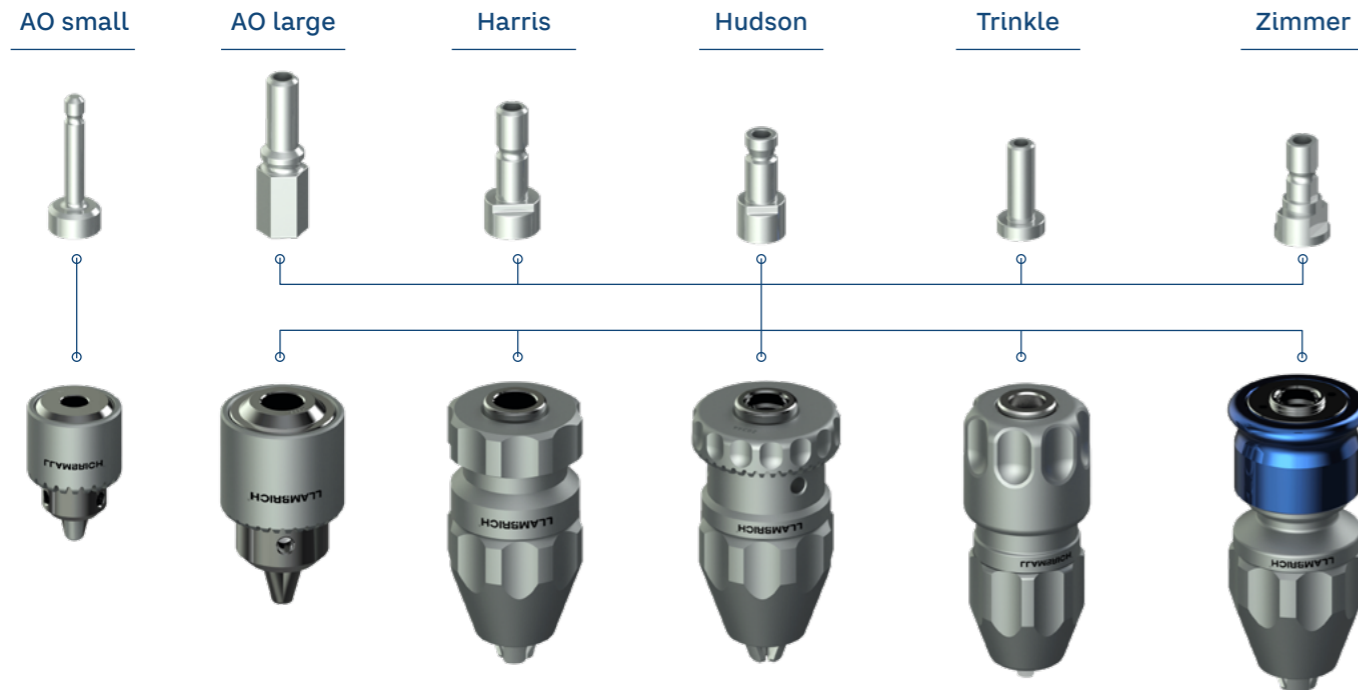
PHI07091T

PART #	MODEL #	CAPACITY RANGE MIN-MAX		KEY	Ø THRU HOLE		Ø1		L1		L2		WEIGHT	
		inches	millimeters		in.	mm	in.	mm	in.	mm	in.	mm	lbs	gram
PTI07091T	SPT-07 R3/8 FGE-T			Not required			1.26	32	5.94	151			0.81	370
PHI07091T	SPH-07 R3/8 FGE-T	.012 - .291	0.3 - 7.4	K1T	0.20	5.3	1.33	34	5.59	142	3.46	88	0.82	372
PNI07091T	SP-07 R3/8 FGE-T			Not required			1.26	32	5.59	142			0.80	364
CSS06091T	CSS-06 R3/8 GE-DS-T	0.20 - .291	0.5 - 7.4	K1M	0.21	5.5	1.10	28	5	127			0.57	260

# Drill Chuck Attachments

Stainless Steel Drill Chucks w/Quick Connectors:  
 AO small, AO large, Trinkle, Hudson, Harris, Zimmer and more

- Available on demand for all Llambrich stainless steel drill chuck series : Keyed (CSS), Keyless (SP), Hybrid (SPH) & Keyless w/Lock System (SPT).
- Quick connectors available: AO, small or large, Trinkle, Hudson, Harris, Zimmer, and others according to customer specifications.
- Specially designed for medical and veterinary surgical power tools.
- All components are free of sharp edges: Excellent choice for use when operating with rubber gloves.
- Manufactured in stainless steel series 300 or 400, and anodized alluminium.
- Are treated with citric passivation processes to avoid corrosion.
- Resistant to autoclaving.
- All chucks are identified with a lot number for traceability according to ISO 13485.
- With thru hole for insertion of drills, reamers, pins and other surgical tools used in the medical field.



# Stainless Steel KEYS

Chuck Keys for CSS & SPH-Hybrid Stainless Drill Chucks

- Manufactured in stainless steel series 300 and 400.
- Are treated with citric passivation processes to avoid corrosion.
- Resistant to autoclaving.
- Identified with a lot number for traceability according to ISO 13485.
- Interchangeable with Jacobs equivalent keys.



CODE #	MODEL #	KEY FOR DRILL CHUCK MODEL	L1		L2		Ø1		Ø2		WEIGHT	
			in.	mm	in.	mm	in.	mm	in.	mm	lbs	gram
ASS061202	K1T Super Grip	SPH-07 see page 7	2.362	60	3.149	80	0.551	14	0.155	3.95	0.18	81.80
ASS041210	K0M	CSS-04 see page 5	2.440	62	1.752	44.50	0.433	11	0.125	3.19	0.07	35.30
ASS061210	K1M	CSS-06 see page 5	2.440	62	2.011	51.10	0.342	8.70	0.155	3.95	0.06	29.00
ASS101200	K10M	CSS-10 see page 5	2.795	71	1.909	48.50	0.393	10	0.216	5.50	0.10	46.30



**LLAMBRICH**  
beyond precision

**LLAMBRICH Precisión, S.L.**

Av. Mare de Déu de Bellvitge, 271-273  
E-08907 L'Hospitalet de Llobregat  
Barcelona - Spain

Tel. +34 93 264 96 23

[www.llambrich.com/surgical](http://www.llambrich.com/surgical)  
[info@llambrich.com](mailto:info@llambrich.com)

